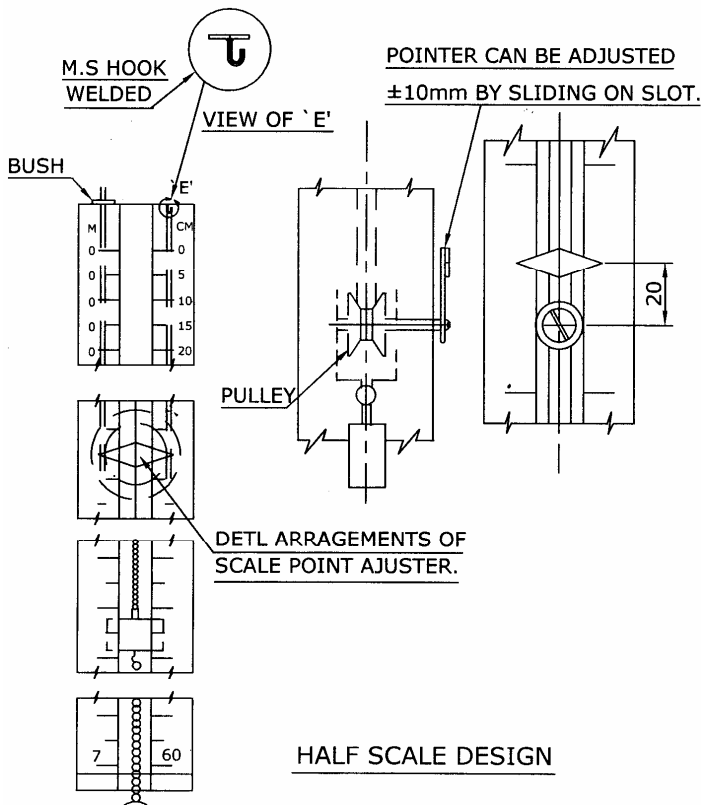
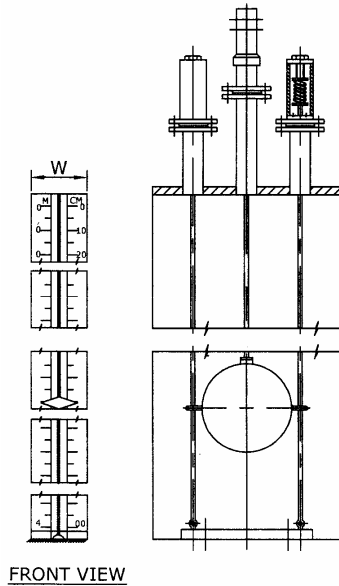


Mechanical Level Indicator

MLI Series Float & Board Type Mechanical Level Indicator is used for local liquid level Indicator of non-pressurised tanks.

Features :

- Simple in Construction.
- Top Mounting Type.
- Chances of failure practically zero as complete operation is mechanical.
- Bright visual indication on flat board scale fitted directly on side of the tank.
- Steel Ball bearing in pulley housing to ensure easier movement of float.
- Anchor Bar with Guide Wire Ropes and Tension Adjusters (to keep guide wire rope taut) prevent lateral movement of float due to turbulence.
- Brass Pull Chain (for range above 2.25 m).
- In case of large ranges (6M & Above), **half size scale** is provided for more convenient Visibility & to reduce Cost. The pointer is fitted on a floating pulley and pointer movement is half of float movement.



Applications :

Local Indication of Level in non-pressurised tanks containing water, oil etc.

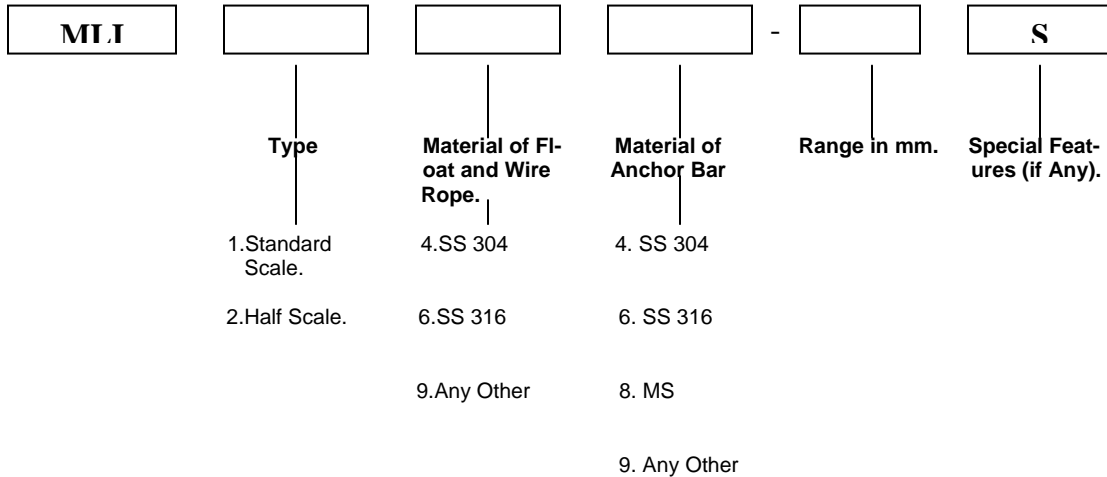
Principle of Operation :

A float moves up and down with rise and fall of liquid level in the tank. Correspondingly the pointer mechanism, with counter balance weight attached to the float wire rope (passing through a pair of pulleys) moves down and up against the Scale (with Scale Channel Block mounted vertically at side of tank). The reading against the pointer on the scale gives direct indication of liquid level.

Specifications :

- Materials of Construction :
- Float : SS 304/ SS 316/ PVC/ PP.
 - Wire Rope : SS 316.
 - Pulley Housing : Aluminium.
 - Pulley & Pulley Shafts : SS 304
 - Flanges, Channel Blocks, Tension Adjusters, Counter Balance Weights. : MS.
 - Scale & Pointer : Aluminium.
- Flanges : Mild Steel flanges normally conform to 1"ANSI # 150 RF(plate type).
- Type of Scale : Standard Full scale type upto 6 M. Half scale above 6 M.
- Channel Blocks : 150 MM wide up to range of 4 M & 250 mm wide above 4 M (with correspondingly thicker and bigger Lines & Letters).
- No.of Channel Blocks : Supplied in 2 M sections for bolting up at site.
- Channel Block Mounting : Plate welded at bottom with grouting arrangement. Series of 14 mm dia holes at 300 mm intervals at the back for suitable supporting brackets.
- Range & Float Sizes : Upto 0-4 M : 150 mm dia round.
 Upto 4-6 M : 200 mm dia round.
 Above 6 M : 300 mm dia round.
- Accuracy : ± 15 mm up to range of 6 M.
 ± 20 mm for range above 6 M..
- Painting : Pointer – Red, Scale – Black on white background, Channel Block and other MS Parts – Epilux 4 Zinc Rich Primer followed by Epilux – 4 Enamel Finish Paint.

MODEL NUMBER OF MECHANICAL LEVEL INDICATOR



Since improvements are made form from time to time , the specifications are liable to change without notice.

Head Office Address : "RajKamal" Bldg, 6th Floor, 13, Camac Street, Kolkata – 700017, Tel : 033)2283-2766/3022-5767/3022-9368 Fax : (033)2283-2719/2280-9645.E-mail : info@levcongroup.com, levconh@vsnl.net, levcon@ricmail.com.

Mumbai Branch Address : 301, Protprima Chambers, 1 Suren Road, Andheri East, Mumbai-400093, Tel : (022)2683-2127/ 2683-3015, Fax : (022)2683-3015. E-mail : levconm@airtelmail.in

LI/MLI/01 (Dt. 26.05.2009).